

*Aggressiveness and genetic diversity of
Ralstonia solanacearum strains from
tomato in Vietnam*

**Hai Thi Hong Truong, Thanh-Thuy
Duong, Tram Thi Hoai Nguyen, Thuy
Thi Thu Nguyen, Linh Hoang Khanh
Nguyen & Tho Thi Quynh Bui**

Indian Phytopathology

ISSN 0367-973X

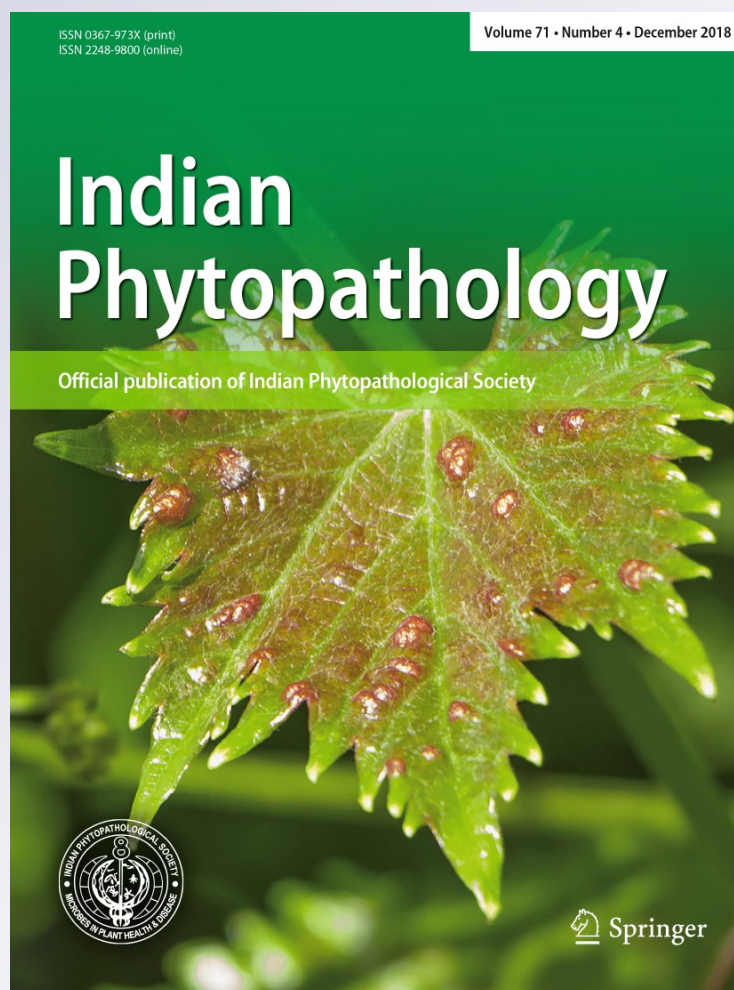
Volume 71

Number 4

Indian Phytopathology (2018)

71:599-610

DOI 10.1007/s42360-018-0084-1



Your article is protected by copyright and all rights are held exclusively by Indian Phytopathological Society. This e-offprint is for personal use only and shall not be self-archived in electronic repositories. If you wish to self-archive your article, please use the accepted manuscript version for posting on your own website. You may further deposit the accepted manuscript version in any repository, provided it is only made publicly available 12 months after official publication or later and provided acknowledgement is given to the original source of publication and a link is inserted to the published article on Springer's website. The link must be accompanied by the following text: "The final publication is available at link.springer.com".



RESEARCH ARTICLE



Aggressiveness and genetic diversity of *Ralstonia solanacearum* strains from tomato in Vietnam

Hai Thi Hong Truong^{1,2} · Thanh-Thuy Duong² · Tram Thi Hoai Nguyen¹ · Thuy Thi Thu Nguyen² · Linh Hoang Khanh Nguyen³ · Tho Thi Quynh Bui⁴Received: 28 May 2018 / Revised: 18 October 2018 / Accepted: 10 November 2018 / Published online: 20 November 2018
© Indian Phytopathological Society 2018

Abstract

In Vietnam, bacterial wilt, caused by *R. solanacearum*, is a major threat to many important field crops. Disease management strategies suggested in the past have remained ineffective. Phylotype analysis and genetic diversity among Vietnamese *R. solanacearum* is unknown. The present study was conducted to investigate the relationship among isolates of *R. solanacearum* in the tomato production areas in Vietnam, to analyze genotypic characteristics, to characterize the phylotypes of the isolates and to determine their aggressiveness. All 207 *R. solanacearum* strains collected from tomato plants in 12 provinces in Vietnam belonged to Asian Phylotype I. All isolates belong to biovar 3, except for isolate Rs86 collected from Ninh Thuan, which belonged to biovar 4. A total of 52 isolates representing 12 origins (provinces) and two Taiwanese strains were selected to investigate genetic diversity and their genetic relationship by using RAPD markers. Based on the unweighted pair group method of arithmetic means endrogram and STRUCTURE results, 54 isolates were grouped into three main clusters. Cluster I includes 3 isolates obtained from Lam Dong province and 1 isolate collected from Tien Giang province. Cluster II had wide distribution from the northern to the southern part of Vietnam. This cluster could be divided into 3 sub-clusters and these sub-clusters were largely separated according to geographical distribution. Sub-cluster IIa consisted of five isolates from Lam Dong province. One isolate from Thai Binh and two isolates from Hai Duong grouped in sub-cluster IIb. Cluster IIc was found only in Hai Phong. Cluster III had highest variation with two sub-clusters. Eight isolates from Southern part, 5 isolates from Nghe An and 2 reference isolates from Taiwan were grouped in sub-cluster IIIa, while 14 isolates mainly from Northern part (Ha Noi, Nam Dinh, and Thai Binh) were grouped in sub-cluster IIIb. Isolates collected in Hai Duong, Hai Phong and Nam Dinh showed higher virulence than those on tomato. The results demonstrated that *R. solanacearum* isolates even though similar in genetic background do not necessarily cause similar virulence. This is the first report on genetic diversity and aggressiveness of Vietnamese *R. solanacearum* isolates in tomatoes.

Keywords Bacterial wilt · Pathogenicity · Aggressiveness · Isolates · Vietnam

Electronic supplementary material The online version of this article (<https://doi.org/10.1007/s42360-018-0084-1>) contains supplementary material, which is available to authorized users.

✉ Hai Thi Hong Truong
truongthihonghai@huaf.edu.vn; tthhai@hueuni.edu.vn

¹ Institute of Biotechnology, Hue University, Province Road 10, Phu Thuong, Phu Vang, Thua Thien Hue, Vietnam

² Agronomy Faculty, University of Agriculture and Forestry, Hue University, 102 Phung Hung, Hue City, Vietnam

³ Faculty of Land Resources and Agricultural Environment, University of Agriculture and Forestry, Hue University, 102 Phung Hung, Hue City, Vietnam

⁴ Ha Tinh University, No 447, 26/3 Road, Ha Tinh City, Vietnam

Introduction

Bacterial wilt caused by *Ralstonia solanacearum* is one of the most damaging soilborne diseases of many important crops worldwide. The host range of the pathogen is very wide and includes more than 450 plant species representing over 50 families of plants (Hayward 1991). *R. solanacearum* is a complex species with exceptional diversity among strains regarding host range, geographical distribution, pathogenicity, epidemiological relationships, and physiological properties (Hayward 1991). Traditionally, this complex species has been subdivided into five races on the basis of differences in host range (Buddenhagen et al. 1962) and six biovars on the basis of carbohydrate utilization

(Hayward 1991, 1994). These classification schemes have been applied to describe strains worldwide; however, there are several limitations of each system such as more time consuming, inability to discriminate at sub-specific level etc.

In order to improve understanding of the genetic relatedness among *R. solanacearum* strains, DNA-based analyses such as restriction fragment length polymorphisms (RFLP), polymerase chain reaction (PCR)-RFLP, 16S rRNA gene sequence analysis, repetitive extragenic palindromic (REP)-PCR, and amplified fragment length polymorphism (AFLP) have been used (Cook et al. 1989; Li et al. 1993; Cook and Sequeira 1994; Fegan et al. 1998; Poussier et al. 2000; Seal et al. 1992; Horita and Tsuchiya 2001; Rodrigues et al. 2012). Fegan and Prior (2005) had proposed phylotype system. The pathogen was classified into four phylotypes. Strains belonging to phylotype III were found only in Africa, while strains belonging to phylotype IV were exclusively found originating from Indonesia. In contrast, the strains belonging to phylotype I and II are present on several continents. Nevertheless, the phylotype I was demonstrated to have the highest evolutionary potential as well as the highest virulence diversity, with a worldwide prevalence and spread (Lebeau et al. 2011; Wicker et al. 2012). This classification scheme was recently confirmed by using a whole-genome microarray approach (Guidot et al. 2007).

Bacterial wilt has been one of the most important diseases of tomato, pepper, groundnut, and potato in Vietnam for a long time. Outbreak zones of this pathogen are still expanding, threatening the production of potato, pepper and tomato in different parts of the country. Several studies on *R. solanacearum* causing bacterial wilt in groundnut and potato in Northern Vietnam have been reported (Nguyen and Phan 1993; Nguyen et al. 2002; Do 2009; Nguyen 2012). Dinh et al. (2008) used RAPD to investigate genetic diversity of *R. solanacearum* isolated from peanut collected in the Northern Vietnam. However, phylotype analysis and genetic diversity among Vietnamese *R. solanacearum* is unknown. The present study was conducted to investigate the relationship among isolates of *R. solanacearum* in the tomato production areas in Vietnam, to analyze genotypic characteristics, to characterize the phylotypes of the isolates and to determine their aggressiveness.

Materials and methods

Sample collection, bacterial isolates, isolation and conditions

Stem pieces (5–6 cm long) of wilted plants were collected from fields in the areas of tomato production during 2014 from different provinces in Vietnam such as Hai Duong, Hai Phong, Ha Noi, Thai Binh, Nam Dinh, Nghe An, Lam

Dong, Can Tho, Ho Chi Minh, Vinh Long, Tien Giang, and Ninh Thuan (Fig. 1). The plant samples were brought to the laboratory for further study. They were first surface disinfected with 70% ethanol, then peeled. The sub samples of these plants were macerated in sterile distilled water. The oozes were then streaked on Kelman's Triphenyl tetrazolium chloride (TTC) agar medium (Kelman 1954). Plates were incubated at 28 ± 2 °C for 48–72 h. *R. solanacearum* colonies were again streaked onto fresh TTC medium for purification. Two single colonies were then transferred in 2 ml of double distilled sterile water and the cultures were stored at 20 ± 2 °C.

Biovar determination

The strains were differentiated based on their ability to utilize disaccharides (sucrose, lactose and maltose) and sugar alcohols (mannitol, sorbitol and dulcitol) as described previously by Hayward (1964). 1.0 ml Hayward's medium was dispensed into 2.0 ml Eppendorf tube containing sucrose, lactose, maltose, mannitol, sorbitol and dulcitol (1% wt/vol) and to which 0.5 ml of bacterial suspension (10^8 CFU/ml) was also added. The tubes containing the mixture were then incubated at 28 °C. They were then examined after 3 days of incubation for changing pH, which was indicated by the change of color.

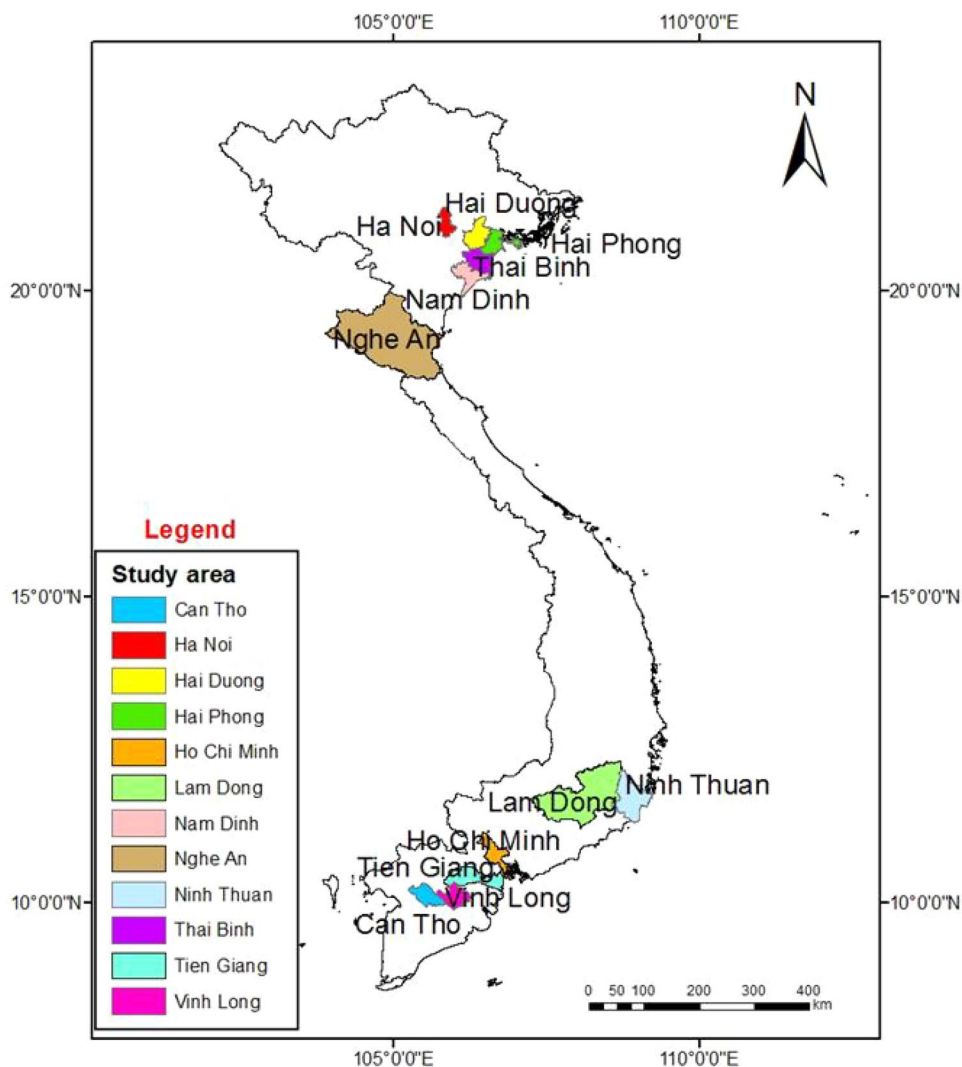
DNA extraction from bacterial strains

Total genomic DNA was extracted following a protocol of Bacteriology Unit, AVRDC-The World Vegetable Center, Taiwan (Jaw-Fen WANG, personal communication). A single colony was suspended in a 1.5 ml eppendorf tube contained 50 µl TE buffer. The bacterial suspension was then boiled for 10 min and centrifuged at 13,000 rpm 4 °C for 6 min. The supernatant was transferred into new autoclaved 1.5 ml—eppendorf tube and stored at -20 °C. DNA quality was checked by electrophoresis of 50 ng aliquots on a 0.8% agarose gel stained with SYBR Green I (Invitrogen, Eugene, OR, USA) and exposed under ultraviolet light.

Confirmation of *R. solanacearum* strains using specific primers

Ralstonia solanacearum strains were again confirmed by using specific primers AU759: 5'-GTCGCCGTC AACTCA CTTTCC-3'; AU760: 5'-GTCGCCGTCAGCAATGCGGAA TCG-3' (Opina et al. 1997). The PCR reactions were performed in Mygenie96 Thermal Block (Bioneer). The 25 µl reaction volume included 5×buffer containing $MgCl_2$ (Bioscience, England), 2.5 mM deoxyribonucleotide triphosphate mix (Bioscience, England), 2 U of *Taq* DNA polymerase (Bioscience, England), and 1 pmol of each primer

Fig. 1 Geographic locations of sample collection sites in Vietnam



P759/P760 and 15–20 ng of genomic DNA. The amplification reactions were carried out using the following thermal profile: 94 °C for 3 min, 53 °C for 1 min, 72 °C for 1.5 min (1 cycles); 94 °C for 0.3 min, 60 °C for 0.3 min, 72 °C for 0.3 min (30 cycles); 72 °C for 5 min (1 cycle) and stored at 4 °C. Amplified products were incubated with a 1:10,000 dilution of the SYBR Green I nucleic acid gel stain (Invitrogen, USA) for 20 min and separated on a 2% agarose gels using 0.5×TBE buffer for 2 h at 120 V and photographed under UV light. A 100 bp ladder was used as a molecular weight marker.

Phylotype analysis

Phylotype identification of each strain was conducted using specific primers (Table 1) as described in literature (Fegan and Prior 2005; Prior and Fegan 2005). Phylotype specific multiplex PCR was carried out in 25 µl final volume of reaction mixture, containing 5U Taq Polymerase (Bioscience,

England), 5×buffer contained MgCl₂ (Bioscience, England), 6 pmols of the primer Nmult:21:1F, Nmult:21:2F, Nmult:22:InF, Nmult:23:AF, Nmult:22:RR and 4 pmols of the primer AU759 and AU760 (Opina et al. 1997). The following cycling program was used in a thermal cycler (Mygenie96 Thermal Block, Bioneer): 96 °C for 5 min and then cycled through 30 cycles of 94 °C for 15 s, 59 °C for 30 s and 72 °C for 30 s, followed by a final extension period of 10 min at 72 °C and stored at 4 °C. Amplified products were incubated with a 1:10,000 dilution of the SYBR Green I nucleic acid gel stain (Invitrogen, USA) for 20 min and separated on a 2% agarose gels using 0.5×TBE buffer for 3 h at 120 V and photographed under UV light. A 100 bp ladder was used as a molecular weight marker.

RAPD analysis

A total of 100 UBC (University of British Columbia) RAPD primers (synthesized by Bioneer, Korea) were

Table 1 List of primers used for multiplex PCR

Primer name	Prime sequence	Expected band size (bp)	Phylotype
Nmult:21:1F	5'-CGTTGATGAGGCGCGCAATTT-3'	144	Phylotype I (Asiaticum)
Nmult:21:2F	5'-AAGTTATGGACGGTGGAAAGTC-3'	327	Phylotype II (Americanum)
Nmult:23:AF	5'-ATTGCCAAGACGAGAGAAGTA-3'	91	Phylotype III (Tropical)
Nmult:22:InF	5'-ATTACAAGAGCAATCGAA-3'	213	Phylotype IV (African)
Nmult:22:RR	5'-TCGCTTGACCCTATAACGAGTA-3'	NA ^a	Amorce reverse unique
759	5'-GTCGCCGTCAACTCACTTTCC-3'	182	Universal <i>R. solanacearum</i> specific primer
760	5'-GTCGCCGTGACGCAATGCGGAATCG-3'		

^aNot amplified

pre-screened on 12 selected isolates representative for 12 origins. Polymorphic primers were then used for confirmation of generated-fragment stability. Selected polymorphic primers were used to genotype *R. solanacearum* for genetic diversity analysis. The PCR reactions were performed in Mygenie96 Thermal Block (Bioneer). The 15 µl reaction volume included 2.5 mM MgCl₂ (Bioscience, England), 200 µM deoxyribonucleotide triphosphate mix (Bioscience, England), 10× PCR buffer, 1 U of *Taq* DNA polymerase (Bioscience, England), and 0.25 µM of random primer and 15–20 ng of genomic DNA. The amplification reactions were carried out using the following thermal profile: 94 °C for 3 min (1 cycle); 94 °C for 1 min, 37 °C for 1 min, 72 °C for 2 min (40 cycles); 72 °C for 7 min (1 cycle). Amplified products were incubated with a 1:10,000 dilution of the SYBR Green I nucleic acid gel stain (Invitrogen, USA) for 20 min and separated on a 1% agarose gels using 0.5×TBE buffer for three and half hours at 120 V and photographed under UV light. A 100 bp ladder was used as a molecular weight marker.

Bacterial aggressiveness assays

Two tomato genotypes, one resistant to *R. solanacearum* (Hawaii 7996 (H7996), *S. lycopersicum*) and the other susceptible (West Virginia 700 (WVa700), *S. pimpinellifolium*) (Wang et al. 1998), which were provided by AVRDC-The World Vegetable Center and one F₁ hybrid (TN52) commonly used in Vietnam were used. Before sowing, seeds were treated by soaking at 4X diluted Chlorox (6% sodium hypochlorite) for 5 min and then rinsed under running water for 15 min and sown immediately in 2-inch pots. The steam-sterilized potting mixture used consisted of sand, soil, rice husk and compost in the ratio of 1:3:1:1. A total of 12 isolates were used for inoculation. The experiment was laid out in split-plot design following with 'strain' as the main-plot and 'plant materials' as the subplot with three replications and 5 plants per replication.

A suspension of each isolate was made in sterile distilled water and adjusted to 10⁸ cfu/mL. Seedlings with four fully expanded true leaves (about three-week old) were inoculated by pouring 20 ml of the above suspension on the soil surface of each pot. Inoculated plants were rated at 4, 7, 14, 21 and 28 days after inoculation (DAI) using a 0–5 scale, where 0 means no symptom; 1 means one leaf partially wilted; 2 means 2–3 leaves wilted; 3 means 4 or more wilted leaves; 4 means all leaves wilted; 5 means death of the plant (Winstead and Kelman 1952). Percentages of wilted plants (PWP) at 4 weeks after inoculation were calculated following the formulas of $PWP = (N_w/N_T) \times 100$, where N_T is number of total plants and N_w is number of wilted plants. Strain aggressiveness was estimated by using the relative area under the disease progress curve (RAUDPC) (Fry 1978), which was calculated in the following manner: First, PWP was used to calculate AUDPC, which expresses the dynamics of disease development according to Shaner and Finney (1977), following the formula: $AUDPC = \sum_{i=1}^{n-1} [(Y_{i+1} + Y_i)/2] \times [X_{i+1} - X_i]$, where Y_i is PWP at the i th observation ($i = 1$ being the first observation point), and X_i is time at the i th observation, and n is total number of observations. Second, RAUDPC was then divided by the number of days from inoculation to the end of observation period.

Data analysis

All percentage data were transformed by arcsine square-root transformation for the analyses of variance. The data were analyzed using the Statistic 10. The entry mean comparison was performed under each strain when the entry × experiment or entry × strain was significant. The significant differences were determined at $P < 0.05$ by LSD. Marker bands of RAPD markers were scored as 1 for presence and 0 for absence. From these data input, a dendrogram was constructed based on the Nei's genetic distances using the Phylip program with the unweighted pair group method by arithmetic averages (UPGMA) cluster analysis. Population structure was analyzed using a model-based approach

available in the software STRUCTURE 2.3.4 (Pritchard et al. 2000). In this analysis, we used the no-admixture model and evaluated 1–20 genetic clusters (K) with 5 permutations for each K value. Each run was implemented with a burn-in period of 25,000 steps followed by 500,000 Monte Carlo Markov (MCM) chain. The estimated log-probability of data [LnP(D)] and ΔK value from STRUCTURE overestimates the number of subpopulations. After grouping, genotypic diversity was evaluated using GenAlEx 6.5.

Results

Collection and identification of bacterial strains

A total of 306 stem pieces from wilted plant were collected from fields in the areas of tomato production during 2014 from 12 provinces in Vietnam. Of these, 207 samples produced bacterial ooze (Supplementary Table 1). The bacteria were cultured on TTC medium and incubated at 28 ± 2 °C for 48 h to produce different colonies. Basically, all bacterial strains yielded typical virulent type colonies, which were cream colored, irregular shaped, highly fluidal with pink and dark pink pigmentation in the center. These characters were consistent with *R. solanacearum* as described by Kelman (1954) on TTC agar medium.

A rapid detection of bacterial isolates using specific universal primer pair 759/760 (Opina et al. 1997) was conducted. Two Taiwanese strains such as Pss4, which belonged to race I/phylogroup I and biovar 3, and Pss186, which belonged to race I/phylogroup I and biovar 1 (Lin et al.

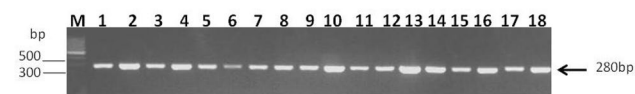
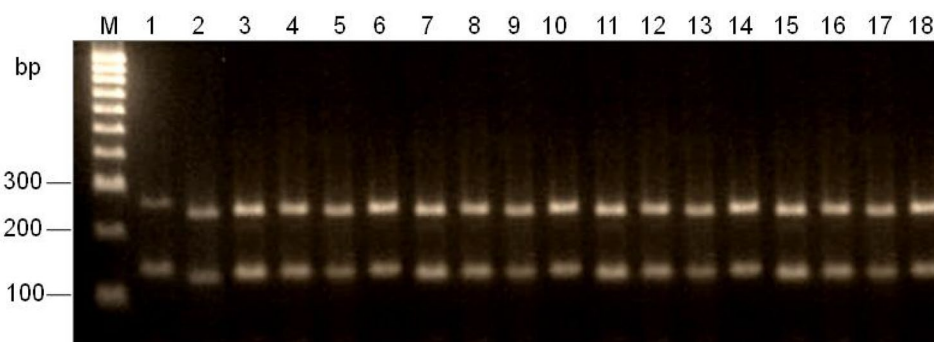


Fig. 2 Electrophoresis of PCR products using specific primer of *R. solanacearum* strains on 2% agarose. Lanes M: 100 bp DNA ladder, 1: Rs4, 2: Rs5, 3: Rs6, 4: Rs10, 5: Rs11, 6: Rs15, 7: Rs18, 8: Rs19, 9: Rs24, 10: Rs25, 11: Rs26, 12: Rs27, 13: Rs28, 14: Rs29, 15: Rs32, 16: Rs38, 17: Pss4, 18: Pss190

Fig. 3 Electrophoresis of PCR products using multiplex PCR primers for phylotype analysis of *R. solanacearum* strains on 2% agarose. Lanes M: 100 bp DNA ladder, 1: Rs4, 2: Rs5, 3: Rs6, 4: Rs10, 5: Rs11, 6: Rs15, 7: Rs18, 8: Rs19, 9: Rs24, 10: Rs25, 11: Rs26, 12: Rs27, 13: Rs28, 14: Rs29, 15: Rs32, 16: Rs38, 17: Pss4, 18: Pss190



2014), provided by Dr. Jaw-Fen WANG (AVRDC-The World Vegetable Center—personal communication), were used as control check. The result showed that all of 207 isolates produced a specific DNA band about 280 bp that was similar with amplified products of two reference strains from Taiwan (Fig. 2).

Biovar determination

The isolates were determined as described by Hayward (1964). The biovar test indicated that 206 strains belonged to biovar 3, only one strain Rs86 collected from Ninh Thuan was determined as biovar 4.

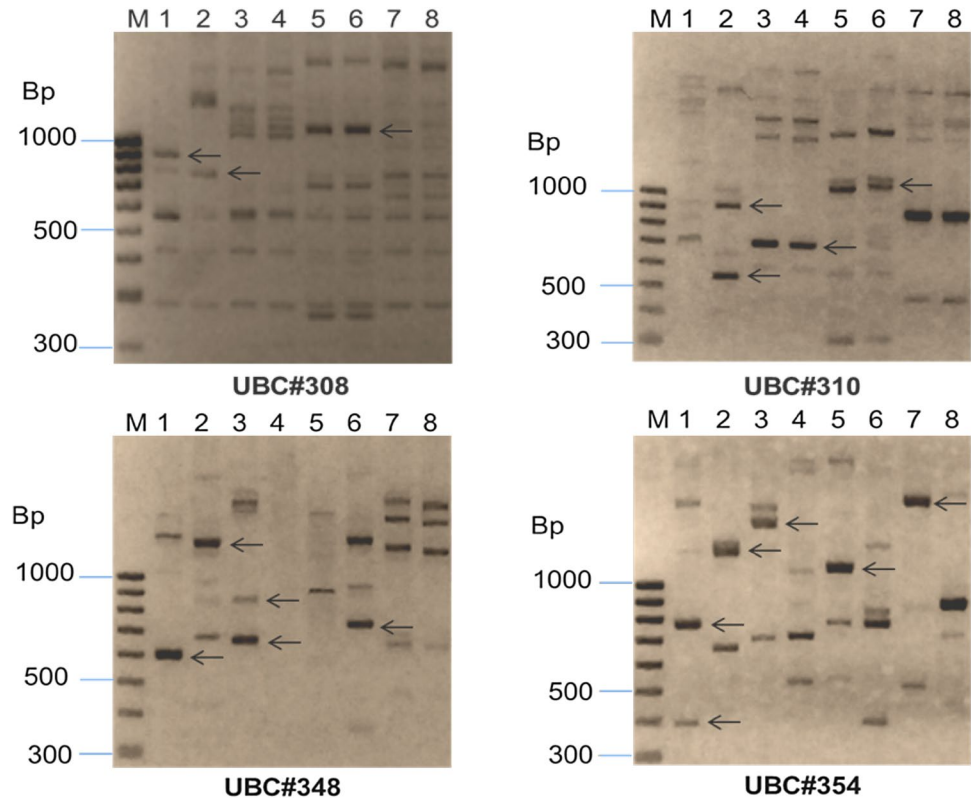
Phylotype identification

Based on multiplex PCR analysis, all of 207 isolates from Vietnam and two reference strains from Taiwan belonged to Phylotype I as 144-bp amplicon was observed in all the isolates and together with 280-bp amplicon of *R. solanacearum* species when PCR products of the strains were subjected to electrophoresis on 2% agarose gel (Fig. 3).

Genetic diversity analysis

RAPD method has been widely used in genetic diversity analysis because it is highly efficient, easy and rapid. In this study, RAPD technique was used as tool to assess polymorphism of 8 *R. solanacearum* isolates, which were representative 8 origins such as Rs11 (Lam Dong), Rs47 (Ho Chi Minh city), Rs66 (Can Tho), Rs86 (Ninh Thuan), Rs120 (Hai Phong), Rs226 (Ha Noi), Rs300 (Thai Binh), and Rs367 (Nghe An). Each isolate was selected randomly among origin's isolates. A total of 100 RAPD University of British Columbia (UBC) primers were used to primarily screen (Supplementary Table 2). Of these, 41 UBC primers were polymorphic among the selected isolates (Fig. 4). In order to confirm consistency of polymorphic primers, the polymorphic primers were rescreened on the 12 selected isolates, which were selected representative 12 origins randomly. The result showed that the same

Fig. 4 Electrophoresis of PCR products using RAPD primers showing polymorphism among selected *R. solanacearum* isolates on 2% agarose. Lanes M: 100 bp DNA ladder, 1: Rs11, 2: Rs47, 3: Rs66, 4: Rs86, 5: Rs120, 6: Rs226, 7: Rs300, 8: Rs367. Arrows are polymorphic fragments

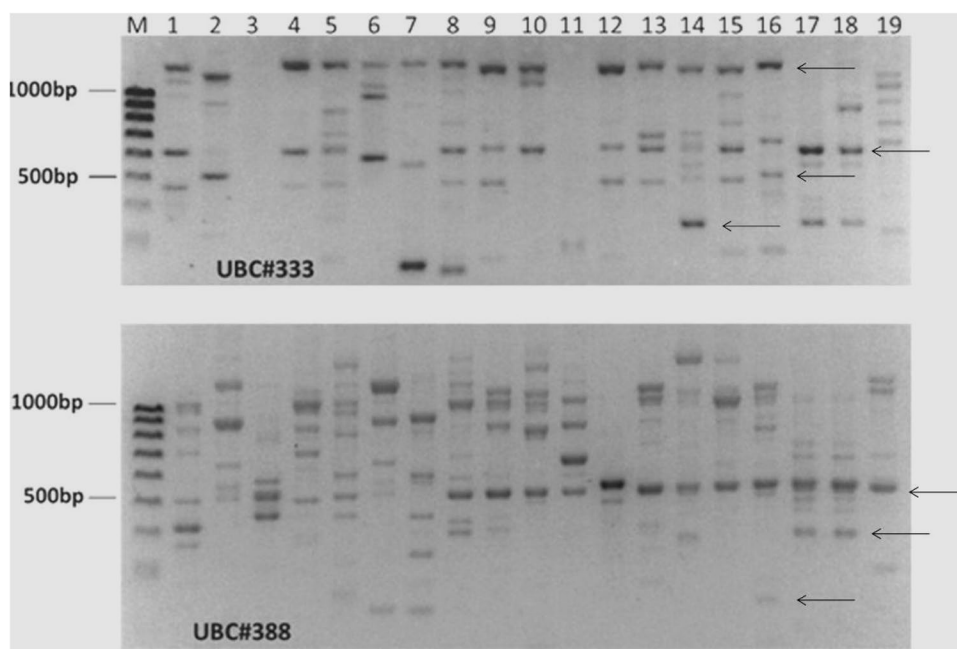


band patterns (data not shown). However, only 21 primers (Table 2), which generated 108 DNA fragments polymorphic among isolates and easy to score, were used to genotype 54 *R. solanacearum* isolates (Supplementary Table 3) that included 52 isolates representing 12 origins in Vietnam and two strains from Taiwan (Pss4 and Pss190) (Fig. 5). The UPGMA dendrogram conducted from Nei's genetic distance and population structure among 54 isolates can be seen in Fig. 6. The ΔK values and log-probability of data indicate that the best number of optimal groups were occurred at $K=3$ and another peak of ΔK could be seen at $K=6$ (Supplementary Fig. 1). Therefore, 54 isolates could be confidently grouped into 3 main genetic clusters. The cluster I consisted of 4 isolates from Lam Dong and Tien Giang provinces. Cluster II had 22 isolates from wide geographical origins. This cluster further could be divided into 3 sub-clusters, the distribution of isolates in sub-cluster IIa and sub-cluster IIc obtained from Lam Dong (The southern highland province) and Hai Duong (the northern lowland province), respectively, likewise, sub-cluster IIc consists one isolate of Thai Binh and two isolates of Hai Duong (northern province). Cluster III were quite complex, however, the isolates in this cluster could grouped into 2 major sub-clusters, IIIa and IIIb, correlated with their geographical origin. Sub-cluster IIIa included 8 southern isolates and 5 isolates of Nghe An province, 2 reference isolates from Taiwan were

Table 2 List of polymorphic primers used for genotyping *R. solanacearum* isolates

No.	Primer	Sequence	No.	Primer	Sequence
1	UBC#308	AGCGGC TAGG	12	UBC#353	TGGGCTCGCT
2	UBC#309	ACATCC TGCG	13	UBC#354	CTAGAGGCCG
3	UBC#310	GAGCCA GAAG	14	UBC#356	GCGGCCCTCT
4	UBC#312	ACGGCG TCAC	15	UBC#358	GGTCAGGCC
5	UBC#317	CTAGGG GCTG	16	UBC#366	CCTGATTGCC
6	UBC#333	GAATGC GACG	17	UBC#368	ACTTGTGCGG
7	UBC#335	TGGACC ACCC	18	UBC#385	ACCGGG AACG
8	UBC#338	CTGTGG CGGT	19	UBC#388	CGGTCGCGTC
9	UBC#348	CACGGC TGCG	20	UBC#391	GCGAACCTCG
10	UBC#349	GGAGCC CCCT	21	UBC#399	TTGCTGGGCG
11	UBC#350	TGACGC GCTC			

Fig. 5 Electrophoresis of PCR products using polymorphic RAPD primers for genotyping *R. solanacearum* isolates on 2% agarose. Lanes M: 100 bp DNA ladder, 1–19: *R. solanacearum* isolates. Arrows are polymorphic fragments selected



also assembled in this sub-cluster, while 14 isolates from the northern part (Ha Noi, Nam Dinh, Thai Binh) were grouped in sub-cluster IIIb.

The value of Nei's genetic distance among 6 sub-clusters revealed the closest relationship of cluster IIa and cluster IIc although they belong two distinct geographical regions (Southern highland and Northern lowland), this is partly explained based on their lowest gene diversity and seem to be homologous than other II sub-clusters (IIb). Conversely, in cluster II, the both originating isolates group from the northern (sub-cluster IIa and IIb) posed the highest genetic distance (Tables 3, 4).

Evaluation of aggressiveness of *R. solanacearum* isolates

Disease incidence was assessed at seedling stage of H7996 (Resistant control), WVa700 (Susceptible control) and TN52 (F_1 hybrid) using 12 isolates, Rs26, Rs38, Rs51, Rs57, Rs66, Rs86, Rs101, Rs127, Rs238, Rs319, Rs341, and Rs373, which were representative of each province. Severe wilting of WVa700, the susceptible control, indicated the environment and the inoculation were suitable for the disease development with all 12 isolates (Fig. 7). TN52, a F_1 hybrid commonly planted in tomato production areas in Vietnam, was highly susceptible to all isolates; however, the aggressiveness caused by Southern isolates (Rs26, Rs38, Rs51, Rs57, Rs66, and Rs86) on TN52 was slightly lower than that (or equal) on WVa700. In contrast, the severity caused by Northern isolates (Rs101, Rs127, Rs249, Rs319, Rs341 and Rs373) on WVa700 was slightly lower than or equal to TN52. Disease progressed most rapidly between 7 and 21 days after inoculation. At 21

DAI, nearly 100% of two genotypes (WVa700 and TN52) displayed near maximum wilting. About 90% (inoculated with isolate Rs86) and 80% (inoculated with isolates Rs26, Rs38, Rs51, Rs57, Rs66, Rs249, Rs319, and Rs373) plants of H7996 remained healthy at 28 DAI. Meanwhile, the resistant line H7996 had only 26.7% survival when inoculated with Rs101 and Rs127 and 33.3% with Rs341. Thus, resistance in H7996 was stable to all isolates except for isolates Rs101, Rs127, and Rs341.

Combined analysis showed a significant interaction between isolate and entry, indicating individual entries had different reactions against different strains (Table 5). Genotypes, WVa700 and TN52, had similar reaction to all isolates based on visual wilting symptom. Genotype H7996 was the most resistant to isolates Rs26, Rs38, Rs51, Rs57, Rs66, Rs86, Rs249, Rs319, and Rs373, but not to isolates Rs101, Rs127, and Rs341. Therefore, differences in symptom development of the 12 isolates suggest variation in their virulence. Overall, isolates collected in Hai Phong, which are distributed in cluster C, and from Hai Duong and Nam Dinh, which are distributed in sub-cluster A2 and A4, respectively, had caused more severe disease than those collected in other provinces in Vietnam (Fig. 8). Thus, low level of similarity among isolates collected from different geographical areas indicated that these isolates were lineage of multiple virulent strains. This is the first report on genetic diversity and aggressiveness of Vietnamese *R. solanacearum* isolates.

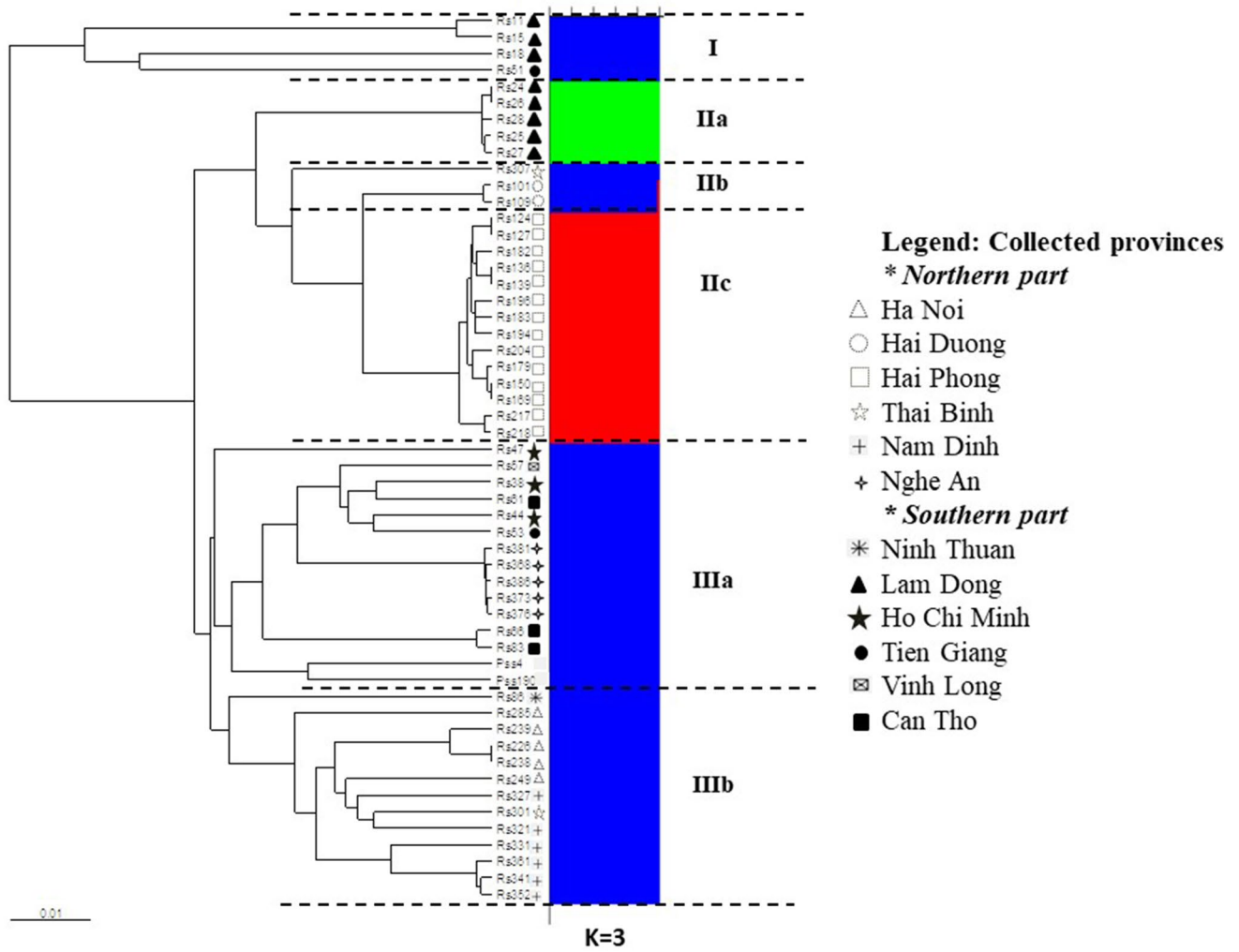


Fig. 6 UPGMA tree and STRUCTURE analysis at K = 3 of 54 *R. solanacearum* isolates

Table 3 Genetic variation of 3 clusters and 6 sub-clusters of 54 *R. solanacearum* isolates

Cluster/ sub-cluster	No. of isolates	No. of different alleles	No. of effective alleles	Percentage of polymorphic loci (%)	Shannon's Information Index	Gene diversity
I	4	0.731	1.254	36.11	0.215	0.147
II	22	1.444	1.333	70.37	0.326	0.210
IIa	5	0.407	1.034	4.63	0.028	0.019
IIb	3	0.843	1.281	35.19	0.224	0.156
IIc	14	0.583	1.079	17.59	0.081	0.051
III	28	2.000	1.663	100.0	0.552	0.375
IIIa	15	1.796	1.519	89.81	0.462	0.306
IIIb	13	1.824	1.538	90.74	0.475	0.316

Table 4 Nei's genetic identity (above diagonal) and genetic distance (below diagonal) values between 6 sub-clusters

Cluster/sub-cluster	I	IIa	IIb	IIc	IIIa	IIIb
I	–	0.697	0.736	0.681	0.850	0.797
IIa	0.361	–	0.667	0.635	0.700	0.651
IIb	0.307	0.405	–	0.801	0.737	0.760
IIc	0.384	0.454	0.222	–	0.709	0.706
IIIa	0.162	0.357	0.305	0.344	–	0.813
IIIb	0.227	0.429	0.275	0.348	0.207	–

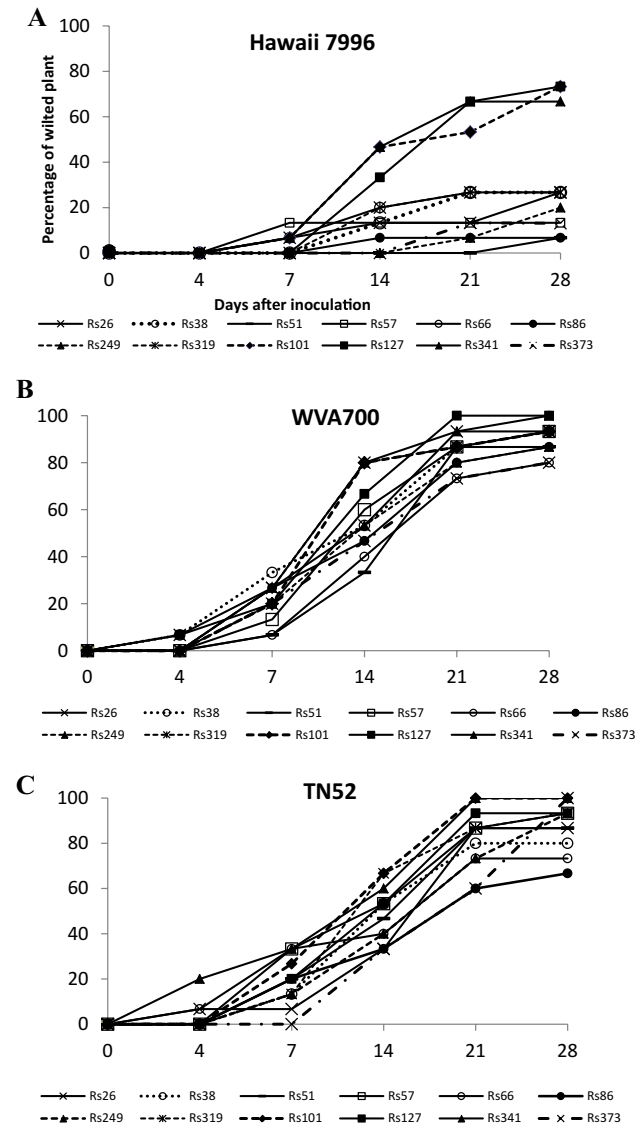


Fig. 7 Severity of bacterial wilt expressed as percentage of wilted plants (PWP) after inoculation with 12 isolates representative of 12 provinces in Vietnam in H7996 (resistant) (a), WVa700 (susceptible) (b), and TN52 (c)

Discussion

In Vietnam, bacterial wilt, caused by *R. solanacearum*, is a major threat to many important crops such as peanut, tomato, pepper, potato, banana, ginger, tobacco (Doan 1995; Le 1997; Do 2009). The infection level fluctuates depending on plant species, ecological zones, season, and weather conditions (Tung et al. 1992; Do 2009). Several management strategies advocated for the control of the disease had very limited success. The genetic diversity of the pathogen might be one of the reasons for the difficulties encountered in disease management. Thus, in this study, we explored the genetic diversity of the pathogen using RAPD marker in order to provide insight into host plant- and site-dependent distribution patterns of this pathogen in Vietnam.

Following the method of Hayward (1964), biovar grouping of 207 isolates of *R. solanacearum* causing bacterial wilt of tomato and collected from 12 origins (provinces) of Vietnam, was done. Only one isolate from Ninh Thuan, Southern Central of Vietnam, belonged to biovar 4, and the remaining isolates belonged to biovar 3. Several studies on biovar determination of *R. solanacearum* strains collected from Peanut in Vietnam have been conducted and the strains were found to belong to race 1 biovar 3 and 4 (Nguyen et al. 1997). This is the first study on biovar determination of *R. solanacearum* from tomato.

All the isolates were evaluated using the hierarchical classification scheme proposed by Fegan and Prior (2005). Multiplex PCR with phylotype-specific primers grouped all of these strains into phylotype I of the *R. solanacearum* species complex, supporting the finding of Nguyen et al. (1997) that *R. solanacearum* isolates collected from different hosts and locations in Vietnam belonged to phylotype I. Ivey et al. (2007) also reported that all *R. solanacearum* strains collected from eggplant in Philippines belonged to race 1, biovar 3 or 4 and phylotype I. According to phylotype analysis of *R. Solanacearum* strains collected from wilted potato in India, Sagar et al. (2014) also indicated that all of fifteen bacterial strains belonged to phylotype I. Xue et al. (2011) also reported that majority of *R. solanacearum* strains in China belonged to Asian phylotype I. Thus, the result in this

Table 5 PWP, and RAUPDC of entries at 28 DAI with 12 isolates

Isolate	PWP						RAUPDC											
	Entry			Entry			Entry			Entry								
	H7996	TN52	WVa700	H7996	TN52	WVa700	H7996	TN52	WVa700	H7996	TN52	WVa700						
Rs26	26.7	b ^a	B ^b	86.7	a	A	93.3	ab	A	11.2	de	B	42.4	ab	A	53.5	ab	A
Rs38	26.7	b	B	80.0	a	A	93.3	ab	A	13.3	de	B	45.7	ab	A	53	ab	A
Rs51	13.3	b	B	86.7	a	A	86.7	ab	A	8.3	de	B	47.7	ab	A	42	ab	A
Rs57	13.3	b	B	93.3	a	A	93.3	ab	A	8.3	de	B	52.6	ab	A	50.7	ab	A
Rs66	26.7	b	B	73.3	a	A	80.0	b	A	16.2	b_e	B	43.8	ab	A	39.5	b	A
Rs86	6.7	b	B	66.7	a	A	86.7	ab	A	4.2	e	B	35.2	b	A	47.3	ab	A
Rs249	20.0	b	B	93.3	a	A	86.7	ab	A	4.2	e	B	42.4	ab	A	47.7	ab	A
Rs319	26.7	b	B	93.3	a	A	93.3	ab	A	15.0	cde	B	52.4	ab	A	58.1	ab	A
Rs101	73.3	a	A	100	a	A	93.3	ab	A	35.4	ab	A	58.9	a	A	56.9	ab	A
Rs127	73.3	a	A	93.3	a	A	100	a	A	34.2	abc	B	51.9	ab	AB	58.1	ab	A
Rs341	66.7	a	B	100	a	A	100	a	A	37.9	a	B	59.5	a	A	60.6	a	A
Rs373	13.3	b	B	100	a	A	80.0	b	A	8.3	de	B	35.8	b	AB	43.6	ab	A

^aMeans in the same column followed by the same lower case letters are not significantly different based on LSD0.05 (between-strain comparisons)

^bMeans in the same row followed by the same upper case letters are not significantly different based on LSD0.05 (within-strain comparisons)

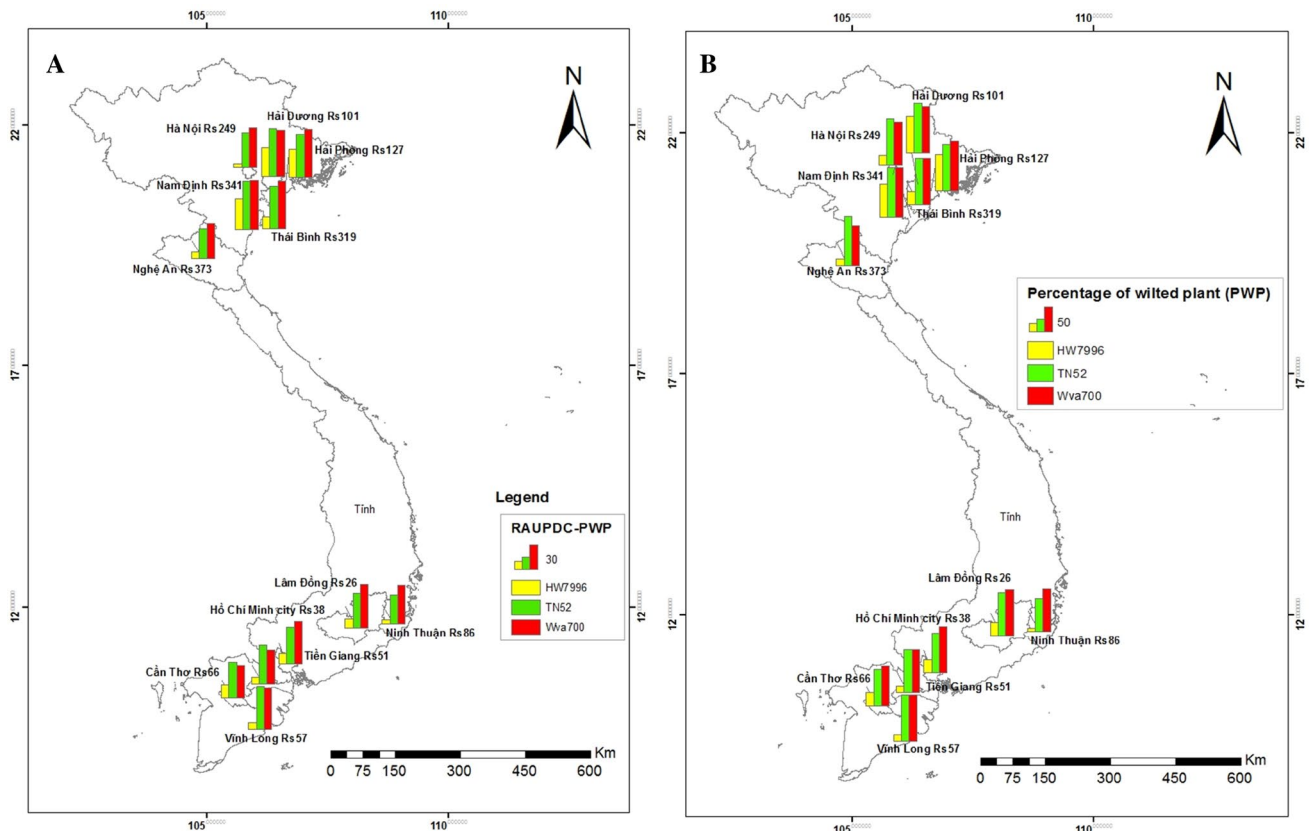


Fig. 8 Comparison of severity of bacterial wilt expressed as percentage of diseased wilted plants (PWP) (A) and RAUPDC-PWP (B) after inoculation with 12 isolates representing 12 provinces in Vietnam in H7996 (resistant), WVa700 (susceptible), and TN52 varieties

study is in agreement with finding of Fegan and Prior (2005) and other previous studies.

Several techniques were chosen to analyze genetic diversity of Asian *R. solanacearum* isolates such PCR–RFLP (Kumar et al. 2004), flc-RFLP (Xue et al. 2011), AFLP (Jeong et al. 2007), and RAPD (James et al. 2003; Chen et al. 2005; Prasannakumar et al. 2012; Dinh et al. 2008). In this study, highly polymorphic level and genetic variation were detected among different strains using RAPD markers. Fifty-two Vietnamese *R. solanacearum* strains and two Taiwanese strains were divided into 3 clusters using 21 RAPD polymorphic primers. From the output of RAPD markers, UPGMA cluster analysis tended to group most close geographically isolates together, while genetic structure analysis using STRUCTURE software showed that three gene pools are represented in the overall set of 54 isolates. Together, 52 Vietnamese *R. solanacearum* strains and two Taiwanese strains were divided into 6 sub-clusters with geographical affiliation using 21 RAPD polymorphic primers. Of the 6 sub-clusters, cluster I, sub-cluster IIIa, and subcluster IIa were the southern isolates, whereas, sub-cluster IIb, IIc and IIIb were represented to the northern strains. Two Taiwan strains grouped in the same cluster with southern Vietnamese isolates. Isolates from Lam Dong were separated in two different clusters (I and IIa). Poussier et al. (2000) used PCR–RFLP analysis based on the *hrp* gene to classify African strains, but the resulting classification system was not fully consistent with the results of Fegan et al. (1998) using subgroup specific primers that designed using the sequences of the 16S–23S intergenic spacer region of the rRNA gene, the polygalacturonase gene, and the endoglucanase gene. Horita and Tsuchiya (2001) used REP-PCR analysis using different primer sets with 16S rRNA gene sequence analysis yielded the genomic fingerprints of several Japanese strains; however, the grouping obtained failed to reflect the diverse hosts and geographical origins from which the isolates were obtained. Rodrigues et al. (2012) also found that there is no correlation concerning race, biovar or geographical origin among Brazilian strains.

Symptom expression of tomato bacterial wilt could be affected by pathogen strain, inoculation method, and environmental factors such as temperature (Hayward 1991). Further, resistance to bacterial wilt in tomato is reported to be location-specific (Wang et al. 1998, 2013) and strains-specific (Truong et al. 2008; Wang et al. 2013). Thus, breeding a tomato variety that could be resistant to all known tomato-pathogenic *R. solanacearum* strains seems unrealistic. Twelve isolates representative of 12 provinces were selected to assess their aggressiveness on H7996 (a resistant line), WVa700 (a susceptible line) and TN52 (a F₁ hybrid commonly used in Vietnam tomato production). H7996 was fully susceptible to isolates Rs101 (Hai Duong), Rs127 (Hai Phong), and Rs341 (Nam Dinh), but resistant to

isolates Rs26 (Lam Dong), Rs38 (Ho Chi Minh), Rs51 (Tien Giang), Rs57 (Vinh Long), Rs66 (Can Tho), Rs86 (Ninh Thuan), Rs249 (Ha Noi), Rs319 (Thai Binh) and Rs373 (Nghe An). The result is in agreement with a previous study that reported H7996 as highly susceptible to an isolate from Hai Duong, but resistant to isolates from Ha Noi, Quang Ninh, Ha Nam and Phu Tho (Truong et al. 2015). Isolates Rs341 (Nam Dinh) and Rs249 (Ha Noi) belonged to cluster A4 but caused different virulence. In this study, we found that Pss4 and Pss190 had high similarity in genetic diversity but differed in aggressiveness (Truong et al. 2008). Thus, the results demonstrated that *R. solanacearum* isolates even though similar in genetic background do not necessarily cause similar virulence.

‘Hawaii 7996’ (H7996) was identified as the tomato cultivar with the most stable resistance to *R. solanacearum* based on field evaluations conducted worldwide (WANG et al. 1998). However, Truong et al. (2008) reported that H7996 was fully susceptible to Pss190 but highly resistant to Pss4. The finding in this study also supported an evidence of the presence of strain-specific resistance in H7996.

Acknowledgements We are grateful to Vietnam National Foundation for Science and Technology Development (NAFOSTED) for supporting research Grant No 106-NN.99-2013.05. Many thanks to Dr. Jaw-Fen Wang for providing DNA of Taiwanese *R. solanacearum* strains.

References

- Buddenhagen I, Sequeira L, Kelman A (1962) Designation of races in *Pseudomonas solanacearum* (Abstr.). Phytopathology 52:726
- Chen Y, He L, Xu J (2005) Detection of bacterial wilt infection in potato using PCR. Acta Phytophylacica Sin 32(2):129–132
- Cook D, Sequeira L (1994) Strain differentiation of *Pseudomonas solanacearum* by molecular genetics methods. In: Hayward AC, Hartman GL (eds) Bacterial wilt: the disease and its causative agent, *Pseudomonas solanacearum*. CAB International, Wallingford, pp 77–93
- Cook D, Barlow E, Sequeira L (1989) Genetic diversity of *Pseudomonas solanacearum*: detection of restriction fragment length polymorphisms with DNA probes that specify virulence and hypersensitive response. Mol Plant Microbe Interact 2:113–121
- Dinh PT, Do PT, Nguyen YT (2008) Genetic diversity of *Pseudomonas solanacearum* isolates caused bacterial wilt in peanut using RADP. J Sci Technol 46(6):43–50 (in Vietnamese)
- Do DT (2009) Commonality of bacterial wilt from different hosts in Ha Noi. J Plant Prod 2:38–42 (in Vietnamese)
- Doan TT (1995). Study on *Pseudomonas solanacearum* on different hosts in Northern Vietnam. Ph.D. Dissertation, Ha Noi, Vietnam, Ha Noi Agriculture University (in Vietnamese)
- Fegan M, Prior P (2005) How complex is the *Ralstonia solanacearum* species complex. In: Allen C, Prior P, Hayward AC (eds) Bacterial wilt disease and the *Ralstonia solanacearum* species complex, 1st edn. APS Press, Minnesota
- Fegan M, Taghavi M, Sly LI, Hayward AC (1998) Phylogeny diversity and molecular diagnostics of *Ralstonia solanacearum*. In: Allen C, Prior P, Elphinstone J (eds) Bacterial wilt disease: molecular and ecological aspects. Springer, Berlin, pp 19–33

- Fry WE (1978) Quantification of general resistance of potato cultivars and fungicide effects for integrated control of potato late blight. *Phytopathology* 68:1650–1655
- Guidot A, Prior P, Schoenfeld J, Carrere S, Genin S, Boucher C (2007) Genomic structure and phylogeny of the plant pathogen *Ralstonia solanacearum* inferred from gene distribution analysis. *J Bacteriol* 189:377–387
- Hayward AC (1964) Characteristics of *Pseudomonas solanacearum*. *J Appl Bacteriol* 27:265–277
- Hayward AC (1991) Biology and epidemiology of bacterial wilt caused by *Pseudomonas solanacearum*. *Annu Rev Phytopathol* 29:65–87
- Hayward AC (1994) The hosts of *Pseudomonas solanacearum*. In: Hayward AC, Hartman GL (eds) *Bacterial wilt: the disease and its causative agent, Pseudomonas solanacearum*. CAB International, Wallingford
- Horita M, Tsuchiya K (2001) Genetic diversity of Japanese strains of *Ralstonia solanacearum*. *Phytopathology* 91:399–407
- Ivey MLL, McP Gardener B, Opina N, Miller SA (2007) Diversity of *Ralstonia solanacearum* infecting eggplant in the Philippines. *Phytopathology* 97:1467–1475
- James D, Girija D, Mathew SK, Nazeem PA, Balu TD, Varma SA (2003) Detection of *Ralstonia solanacearum* race 3 causing bacterial wilt of solanaceous vegetables in Kerala, using random amplified polymorphic DNA (RAPD) analysis. *J Trop Agric* 41:33–37
- Jeong YH, Kim J, Kang YS, Lee SD, Hwang IY (2007) Genetic diversity and distribution of Korean isolates of *Ralstonia solanacearum*. *Plant Dis* 91:1277–1287
- Kelman A (1954) The relationship of pathogenicity of *Pseudomonas solanacearum* to colony appearance in Tetrazolium medium. *Phytopathology* 51:158–161
- Kumar A, Sarma YR, Anandaraj M (2004) Evaluation of genetic diversity of *Ralstonia solanacearum* causing bacterial wilt of ginger using REP-PCR and PCR-RFLP. *Curr Sci* 87:1555–1561
- Le TL (1997) Influence of different ecology factors on bacterial wilt in peanut in Northern Vietnam. *J Plant Prod* 4:5–8 (in Vietnamese)
- Lebeau A, Daunay MC, Frary A, Palloix A, Wang JF, Dintinger J, Chiroleu F, Wicker E, Prior P (2011) Bacterial wilt resistance in tomato, pepper, and eggplant: genetic resource respond to diverse strain in the *Ralstonia solanacearum* species complex. *Phytopathology* 101:154–165
- Li X, Dorsch M, Del Dot T, Sly LI, Stackebrandt E, Hayward AC (1993) Phylogenetic studies of the rRNA group II pseudomonads based on 16S rRNA gene sequences. *J Appl Bacteriol* 74:324–329
- Lin CH, Tsai KC, Prior P, Wang JF (2014) Phylogenetic relationship structure of *Ralstonia solanacearum* isolated from diverse origins in Taiwan. *Plant Pathol* 63:1395–1403
- Nguyen TT (2012) Study on bacterial wilt caused by *Ralstonia solanacearum* smith in peanut and Potato in Ha Noi and control strategies. Ph.Dissertation, Ha Noi, Vietnam, Ha Noi Agriculture University (in Vietnamese)
- Nguyen LT, Phan TB (1993) Bacterial wilt in peanut in Northern Vietnam. In: *Proceedings of plant production*, pp 15–16 (in Vietnamese)
- Nguyen HX, Nguyen YT, Nguyen LV (1997) Results of study on distribution and damage of *R. solanacearum* in Northern Vietnam. *J Plant Prod* 6:27–31 (in Vietnamese)
- Nguyen YT, Nguyen VV, Dang LTP (2002) Race and biovar of *Ralstonia solanacearum* caused bacterial wilt in different hosts. In: *Proceeding of plant disease and biotechnology*, Ha Noi, Vietnam, pp 64–66 (in Vietnamese)
- Opina N, Tavner F, Hollway G, Wang JF, Li TH, Maghirang R, Fegan M, Hayward AC, Krishnapillai V, Hong WF, Holloway BW, Timmis JN (1997) A novel method for development of species and strain-specific DNA probes and PCR primers for identifying *Burkholderia solanacearum* (Formerly *Pseudomonas solanacearum*). *Asia Pac J Mol Biol Biotechnol* 5:19–30
- Poussier S, Trigalet-Demery D, Vanderwalle P, Goffinet B, Luisetti J, Trigalet A (2000) Genetic diversity of *Ralstonia solanacearum* as assessed by PCR-RFLP of the *hrp* gene region, AFLP and 16S rRNA sequence analysis, and identification of an African subdivision. *Microbiology* 146:1679–1692
- Prasannakumar MK, Chandrashekhara KN, Deepa M, Vani A, Khan ANA (2012) Finger printing of *Ralstoniasolanacearum* isolates by Rep-PCR and RAPD. *Pest Man Hortic Ecosyst* 18:179–187
- Prior P, Fegan M (2005) Recent developments in the phylogeny and classification of *Ralstonia solanacearum*. *Acta Hort* 695:127–136
- Pritchard JK, Jonathan K, Stephens M, Donnelly P (2000) Inference of population structure using multilocus genotype data. *Genetics* 155(2):945–959
- Rodrigues LMR, Destéfano SAL, da Silva MJ, Costa GGL, Maringoni AC (2012) Characterization of *Ralstonia solanacearum* strains from Brazil using molecular methods and pathogenicity tests. *J Plant Pathol* 94(3):505–516
- Sagar V, Gurjar MS, Arjunan J, Bakade RR, Chakrabarti SK, Arora RK, Sharma S (2014) Phylotype analysis of *Ralstonia solanacearum* strains causing potato bacterial wilt in Karnataka in India. *Afr J Microbiol Res* 8:1277–1281
- Seal SE, Jackson LA, Daniels MJ (1992) Use of tRNA consensus primers to indicate subgroups of *Pseudomonas solanacearum* by polymerase chain reaction amplification. *Appl Environ Microbiol* 58:3759–3761
- Shaner G, Finney RE (1977) The effect of nitrogen fertilization in the expression of slow-mildewing resistance in Knox wheat. *Phytopathology* 67:1051–1056
- Truong HTH, Wang JF, Esch E (2008) Resistance to Taiwanese race 1 strains of *Ralstonia solanacearum* in wild tomato germplasm. *Eur J Plant Pathol* 122:471–479
- Truong HTH, Tran TV, Nguyen TTT, Pham BT, Tran HN (2015) Aggressiveness assessment of bacterial *Ralstonia solanacearum* isolates in the Northern region. *Sci Technol J Agric Rur Dev* 260:19–25 (in Vietnamese)
- Tung PX, Vander Zaag P, Schemiediche P (1992) Effects of resistance genes, heat tolerance genes and cytoplasm on expression of resistance to *Pseudomonas solanacearum* in potato. *Euphytica* 60:127–138
- Wang JF, Hanson PM, Barnes JA (1998) Worldwide evaluation of an international set of resistance sources to bacterial wilt in tomato. In: Prior P, Allen C, Elphinstone J (eds) *Bacterial wilt disease: molecular and ecological aspects*. Springer, Berlin, pp 269–275
- Wang JF, Fang IH, Truong HTH, Huang SM, Balareto CH, Dittapongpitch V, Hidayati N (2013) Identification of major QTLs associated with stable resistance of tomato cultivar ‘Hawaii 7996’ to *Ralstonia solanacearum*. *Euphytica* 190:241–252
- Wicker E, Lefeuvre P, Cambiaire JC, Lamaire C, Poussier S, Proir P (2012) Contrasting recombination patterns and demographic histories of the plant pathogen *Ralstonia solanacearum* inferred from MLSA. *Int Soc Microb Ecol J* 6:1–14
- Winstead NN, Kelman A (1952) Inoculation techniques for evaluating resistance to *Pseudomonas solanacearum*. *Phytopathology* 42:628–634
- Xue QY, Yin YN, Yang W, Heuer H, Prior P, Guo JH, Smalla K (2011) Genetic diversity of *Ralstonia solanacearum* strains from China assessed by PCR-based fingerprints to unravel host plant- and site-dependent distribution patterns. *FEMS Microbiol Ecol* 75:507–519